

Options Consideration

January 11, 2024

A dark blue diagonal gradient bar that starts from the bottom left and extends towards the top right, covering the lower half of the slide.

*Thank
You!*

The Hillsdale Board of Education

Our Parents

Hillsdale Residents

**Borough of Hillsdale Business
Administrator**

Agenda

Brief History

**Feedback from Previous
Meeting**

Revised Cost Estimates

Breakout Sessions

Group Feedback

Closing

June 1 Meeting Feedback

- *The cost was too high*
- *Something needs to be done relating to George G. White*
- *Relocate 5th grade to their respective elementary schools*
- *More communication*

October 5, 2023 Meeting Feedback

- *More State Aid is present*
- *Interest highest in Options 2&3*
- *Enhanced understanding is needed differentiating Option 2 & 3*
- *Additional programming options at GW are desirable. (STEM, MakerSpace, Culinary Arts, Industrial Arts)*

November 5, 2023 Meeting Feedback

- *Option 3 was preferred by each group*
- *Interest in asking multiple questions of the ballot*
- *Option 2 most disruptive along w/ concerns on the space at each elem. school*
- *Can a gradient of impact be shown based on assessed value?*
- *Can you share the ballot question(s) in advance?*
- *Consequences of rejected referendum*

The Barriers

There is a Cost
Divided Feelings
Time
Social Media
I have a guy . . .
Current Events

In-The-Moment Considerations

- ***Presenting and modifying options in real-time***
- ***Costs in 2025***
- ***Renovation bonding will take place over a 20 yr term***
- ***The evolution of a project***

Guiding Principles



- ***Save George White***
- ***Maximize State Aid***
- ***Lower Tax Impact***

Timeline

Projected September 2024 Referendum

Updated January 2024

September 24, 2024 - Referendum Vote

July 2024 - Submission of Referendum Question to Bergen County Office of Elections

June 2024- Anticipated Receipt of PEC Letter

February 2024 - Decision on Plan/
Submission of Plan to NJ Department of Education

January 2024- Options/Review Feedback

November 2023 - Options/Review Feedback

October 2023 - Options Review/Feedback

Options Review

Option 1	Option 2	Option 3
<ul style="list-style-type: none">● Full renovation of GW● Reconstruction of multi-purpose rooms w/ 2 classrooms● Temporary classrooms● 5th grade returns to each respective elementary schools● Classroom additions of Meadowbrook● Classroom additions at Ann Blanche Smith	<ul style="list-style-type: none">● Full renovation of GW● Reconstruction of multi-purpose rooms w/ 2 classrooms● Temporary classrooms● Additional classrooms for enhanced programming● 5th grade returns to each respective elementary schools● Classroom additions of Meadowbrook● Classroom additions at Ann Blanche Smith	<ul style="list-style-type: none">● Full renovation of GW● Reconstruction of multi-purpose rooms w/ 2 classrooms● Temporary classrooms● Additional classrooms for enhanced programming● Additional classrooms for projected enrollment increase● No additions at Meadowbrook or ABS● Turf Field(removed)

Option 3



George White - Floor 1 Option 3

- *5th Grade Remains*
- *Additional Classrooms on 1st Floor and 2nd Floor*



SECOND FLOOR PLAN



ROOM UTILIZATION:	
GENERAL CLASSROOMS (24)	
5TH GRADE = 6	
6TH GRADE = 6	
7TH GRADE = 6	
8TH GRADE = 6	
SCIENCE LABS (4)	
STEM / MAKER / THINK TANK (3)	
ADMIN / FACULTY / NURSE	
CORE SPACES (3)	
PROGRAM (3)	
ART = 1	
MUSIC = 2	
SPECIAL ED/ SGI (5/3)	
MECH. / STOR. / TOILETS	
OUTDOOR LEARNING ENVIRONMENTS	

OPTION - 3
GRADES 5, 6, 7, 8



HILLSDALE BOARD OF EDUCATION

PROPOSED RENOVATIONS/ADDITIONS GEORGE G. WHITE SCHOOL



October 00, 2023



- George White - Floor 2**
Option 3
- 5th Grade Remains
 - Additional Classrooms on 1st Floor and 2nd Floor

ROOM UTILIZATION:	
GENERAL CLASSROOMS (24)	
5TH GRADE = 6	
6TH GRADE = 6	
7TH GRADE = 6	
8TH GRADE = 6	
SCIENCE LABS (4)	
STEM / MAKER / THINK TANK (3)	
ADMIN. / FACULTY / NURSE	
CORE SPACES (3)	
PROGRAM (3)	
ART = 1	
MUSIC = 2	
SPECIAL ED/ SGI (5/3)	
MECH. / STOR. / TOILETS	
OUTDOOR LEARNING ENVIRONMENTS	

SECOND FLOOR PLAN

OPTION - 3
GRADES 5, 6, 7, 8



HILLSDALE BOARD OF EDUCATION

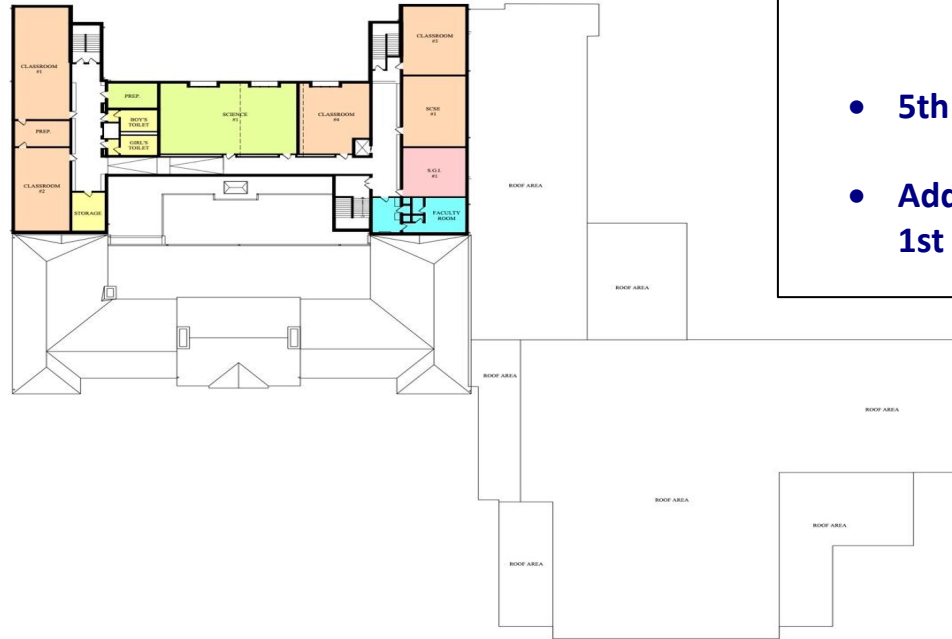
PROPOSED RENOVATIONS/ADDITIONS
GEORGE G. WHITE SCHOOL



October 00, 2023

George White - Floor 3 Option 3

- 5th Grade Remains
- Additional Classrooms on 1st Floor and 2nd Floor



ROOM UTILIZATION:	
GENERAL CLASSROOMS (24)	
5TH GRADE = 6	
6TH GRADE = 6	
7TH GRADE = 6	
8TH GRADE = 6	
SCIENCE LABS (4)	
STEM / MAKER / THINK TANK (3)	
ADMIN. / FACULTY / NURSE	
CORE SPACES (3)	
PROGRAM (3)	
ART = 1	
MUSIC = 2	
SPECIAL ED/ SGI (5/3)	
MECH. / STOR. / TOILETS	
OUTDOOR LEARNING ENVIRONMENTS	

THIRD FLOOR PLAN



OPTION - 3
GRADES 5, 6, 7, 8



HILLSDALE BOARD OF EDUCATION

PROPOSED RENOVATIONS/ADDITIONS GEORGE G. WHITE SCHOOL



October 00, 2023

Costs

All costs are estimates

A dark blue diagonal gradient bar that starts from the bottom left and extends towards the top right, covering the lower half of the slide.

	Option 1	Option 2	Option 3
Estimated Total Cost	\$65, 702,000	\$71,216,000	\$61,258,000
Estimated State Aid	\$16,000,000	\$16,000,000	\$16,000,000
Estimated Tax Impact	\$1,066.16	\$1,177.55	\$970.85
Debt Service Roll Off	\$103	\$103	\$103
Net Tax Impact - Yearly	\$963.16	\$1074.55	\$867.85
Net Tax Impact-Monthly	\$80.26	\$89.54	\$72.32

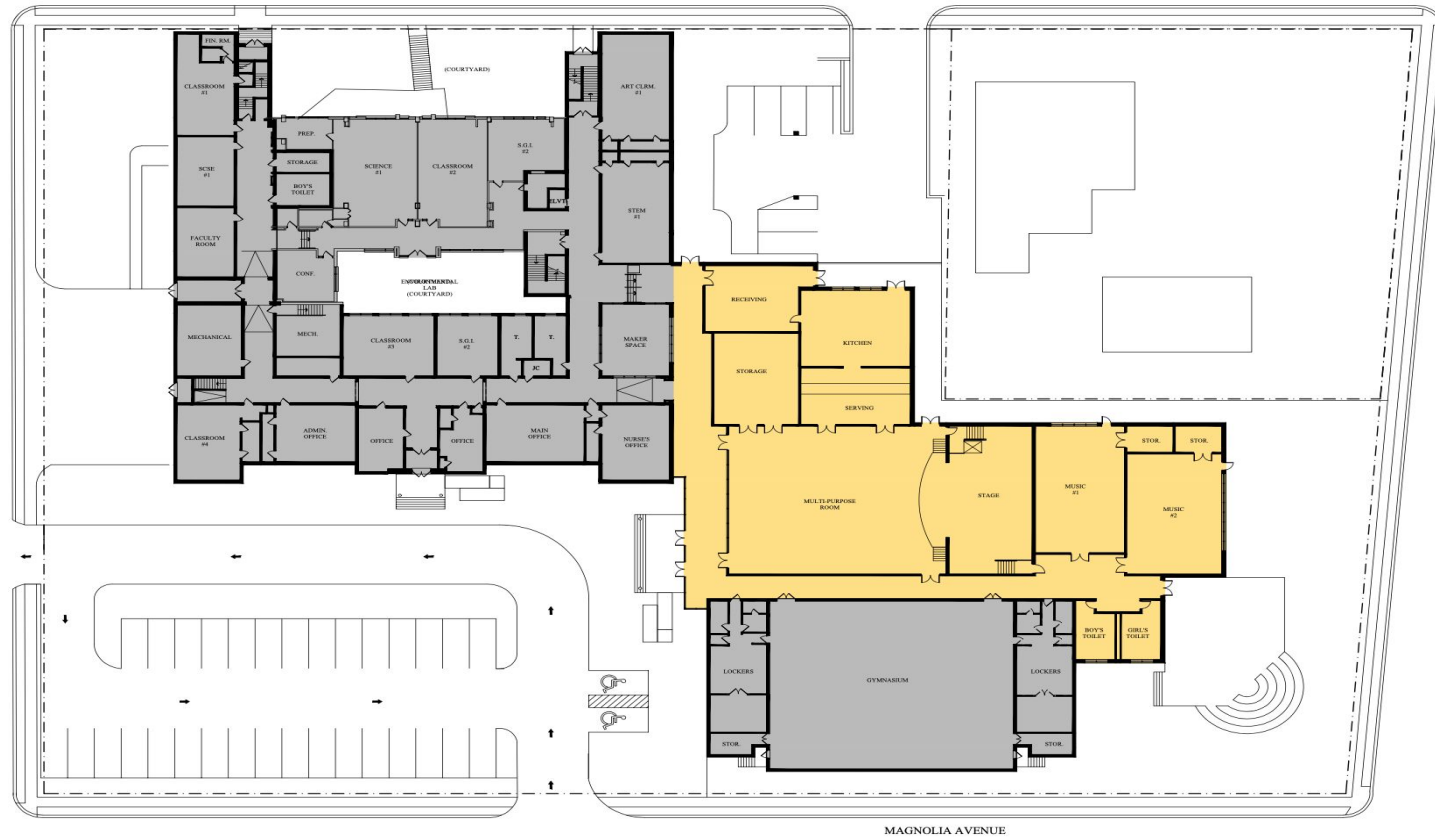
Option 3 – A Two Question Ballot

All costs are estimates based avg. assessed home

Question A

- Full renovation of GW
- Reconstruction of multi-purpose room w/ 2 classrooms
- Temporary Classrooms

	Question A
Total Cost	\$54,114,000
Tax Impact	\$827.98
Debt Service Roll Off	\$103
Net Tax Impact - Yearly	\$724.98
Net Tax Impact-Monthly	\$60.42



Question A

Renovation, 2 Classrooms, new multi-purpose room, temporary classrooms

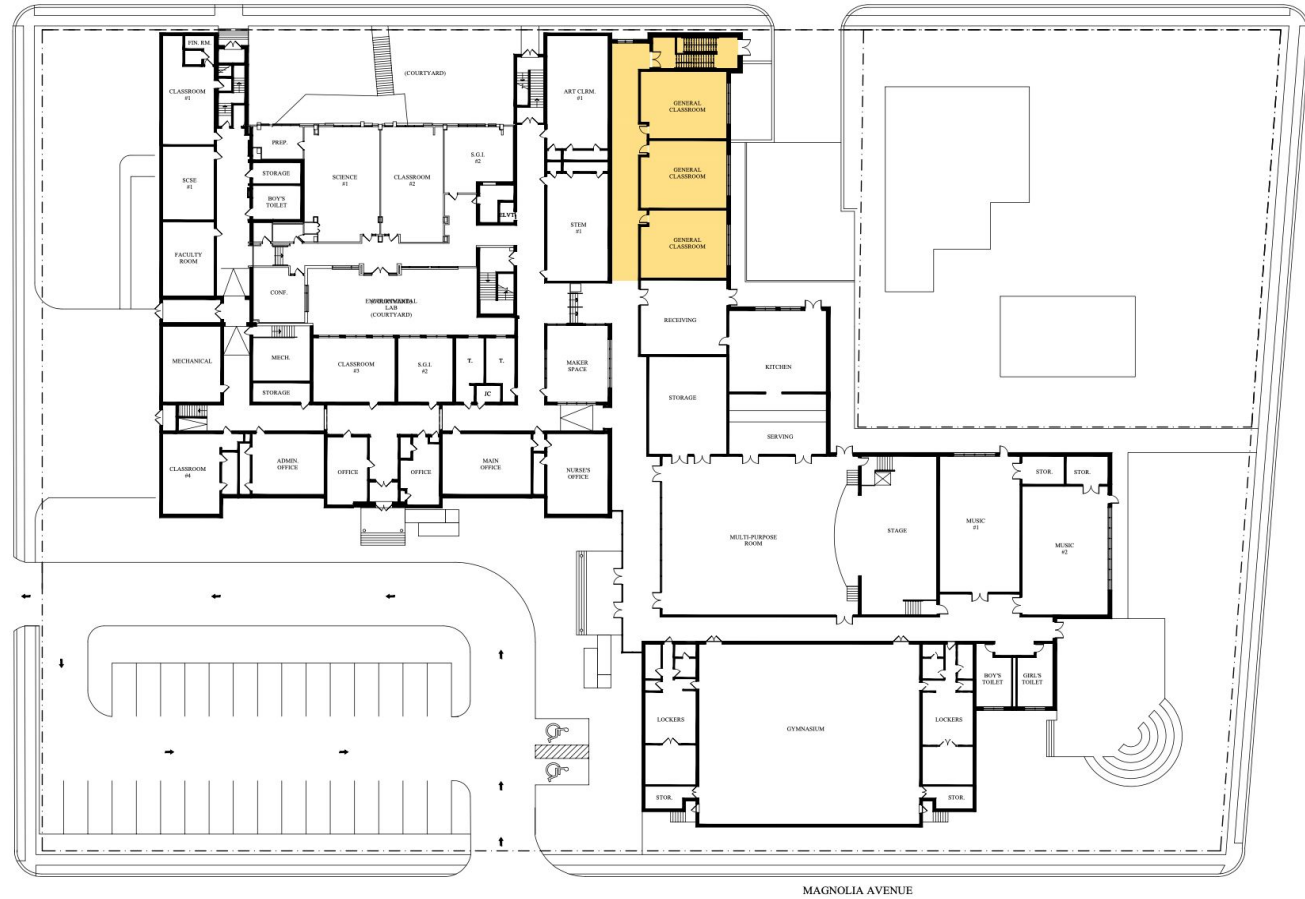
Option 3 – A Two Question Ballot

All costs are estimates based avg. assessed home

Question B

- Additional classrooms for enhanced programming
- Additional classrooms for projected enrollment increase

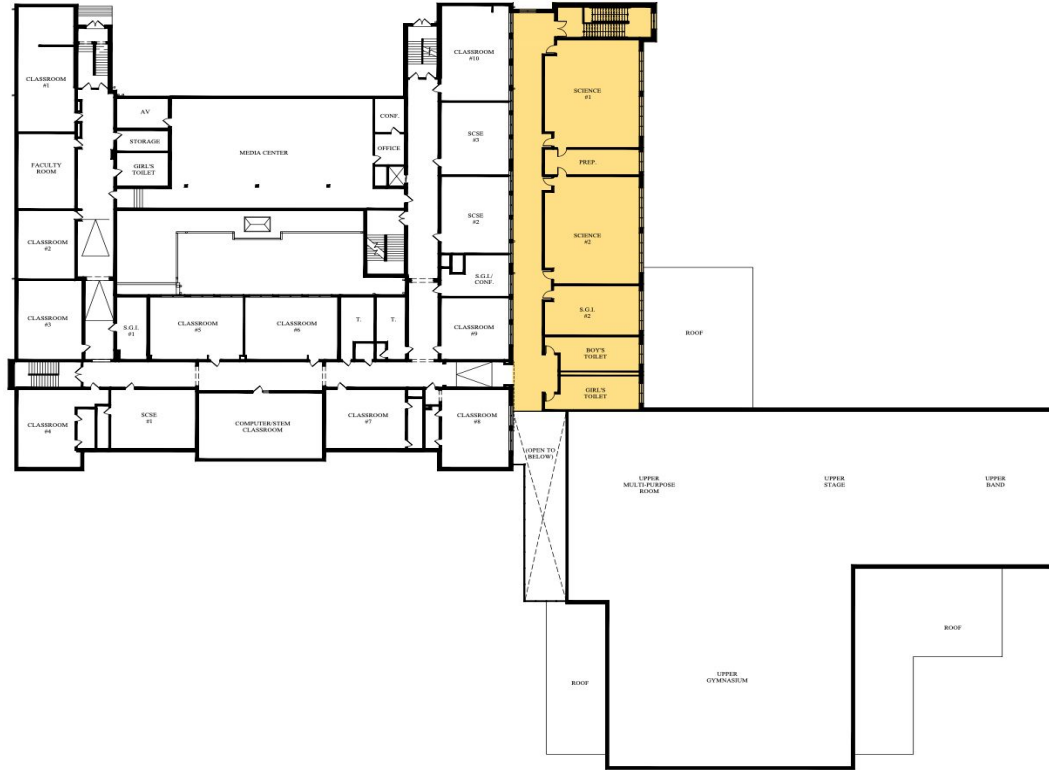
	Question B
Total Cost	\$7,143,000
Net Tax Impact - Yearly	\$142.80
Net Tax Impact-Monthly	\$11.90



MAGNOLIA AVENUE

Question B

Additional classrooms for increased enrollment and enhanced programming



Question B

Additional classrooms for increased enrollment and enhanced programming

Tax Impact Based On Assessed Value

This is not market value or what you see on Zillow

Assessed Value	Option 3 Tax Impact	Debt Service Roll Off (Est.)	Net Tax Impact Yearly	Net Tax Impact Monthly
\$300,000	\$613.08	\$65	\$548.08	\$45.67
\$350,000	\$715.21	\$76	\$639.21	\$53.26
\$400,000	\$817.44	\$87	\$730.44	\$60.87
\$450,000	\$919.62	\$97	\$822.62	\$68.55
\$475, 032	\$970.85	\$103	\$867.85	\$72.32
\$500,000	\$1021.90	\$108	\$913.90	\$76.15
\$550,000	\$1,123.98	\$119	\$1,004.98	\$83.74
\$600,000	\$1,226.16	\$130	\$1096.16	\$91.34

How do I find the assessed value of my home?

1. Visit
<https://www.hillsdale.nj.org>
2. Click on the “Departments and Services ” Tab
3. Click on “Taxes” at the very bottom of the drop-down menu.
4. Click on the “Tax Assessor” Option
5. Click on the “View Your Property Assessment” Link

Consequence of Inaction

A dark blue diagonal gradient bar that starts from the bottom left and extends towards the top right, covering the lower half of the image.

What are the consequences of a rejected referendum?

- Progress is further delayed
- Infrastructure continues to age
- Lack of preparation of projected increase in enrollment
- District resources constrained addressing “band-aid” or emergency fixes that don’t address the long term solution
- Perceived stigma of not valuing the setting and programming of community children
- Costs will go up

What are the consequences of a rejected referendum?

- **Operating inefficient systems**
- **More difficult to catch-up with each passing year**
- **No upgraded facilities**
- **Raising budget to increase failing infrastructure**
- **Interference during the school year**
- **Fixes done on emergency basis**
- **Not a 21st century learning setting**

Breakout Sessions

- Groups are randomly organized by color coded index card.
- With your randomly selected group go to the location as indicated in the presentation.
- Each group will need 1 recorder and 1 speaker. This can be the same person.
- As indicated on the 1 pager, provide feedback to be shared when everyone comes back together.
- Breakout session will last about 25 minutes.

Breakout Session Task

1. Is a two question approach on the ballot favorable?
2. How do you share about the upcoming vote?
3. Thinking about the history of this process, inclusive of the March 2023 referendum and the presentation of 3 new options in conjunction with the three public meetings meetings, are there new ideas that emerged?
4. How can we better communicate the importance of this vote?

Breakout Sessions

Yellow Group - 112

Blue Group -114

Purple Group -115

Green - Cafetorium

Pink Group -Cafetorium

White Group - Music Room -117

Additional As Needed

102, 105, 101A

Breakout
Sessions



Feedback
&
Sharing

Thank You!

A dark blue diagonal gradient bar that starts from the bottom left corner and extends towards the top right corner, covering the lower half of the slide.

Appendix A

Constraints, Options 1 & 2

George White - Floor 1 Option 1

ROOM UTILIZATION:	
GENERAL CLASSROOMS (18)	
6TH GRADE = 6	
7TH GRADE = 6	
8TH GRADE = 6	
SCIENCE LABS (4)	
STEM / MAKER / THINK TANK (2.5)	
ADMIN / FACULTY / NURSE	
CORE SPACES (3)	
PROGRAM (3)	
ART = 1	
MUSIC = 2	
SPECIAL ED/ SGI (5/3)	
MECH. / STOR. / TOILETS	
OUTDOOR LEARNING ENVIRONMENTS	



FIRST FLOOR PLAN



MAGNOLIA AVENUE

OPTION - 1
GRADES 6, 7, 8



HILLSDALE BOARD OF EDUCATION

PROPOSED RENOVATIONS/ADDITIONS GEORGE G. WHITE SCHOOL



October 00, 2023

George White - Floor 2 Option 1



SECOND FLOOR PLAN

ROOM UTILIZATION:	
GENERAL CLASSROOMS (18)	
6TH GRADE = 6	
7TH GRADE = 6	
8TH GRADE = 6	
SCIENCE LABS (4)	
STEM / MAKER / THINK TANK (2.5)	
ADMIN. / FACULTY / NURSE	
CORE SPACES (3)	
PROGRAM (3)	
ART = 1	
MUSIC = 2	
SPECIAL ED/ SGI (5/3)	
MECH. / STOR. / TOILETS	
OUTDOOR LEARNING ENVIRONMENTS	

OPTION - 1
GRADES 6, 7, 8



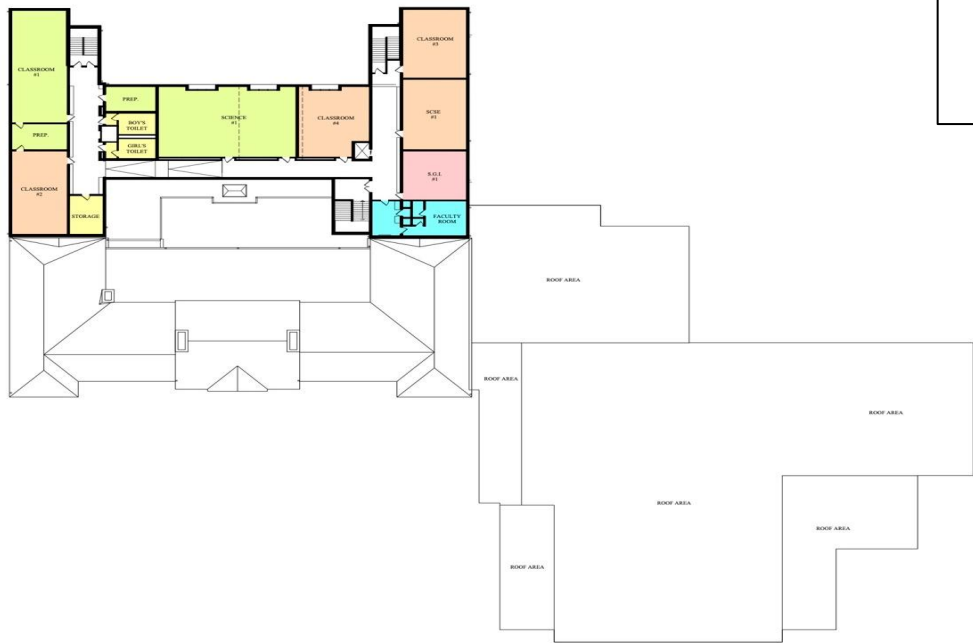
HILLSDALE BOARD OF EDUCATION

PROPOSED RENOVATIONS/ADDITIONS GEORGE G. WHITE SCHOOL



October 00, 2023

George White - Floor 3 Option 1



ROOM UTILIZATION:	
GENERAL CLASSROOMS (18)	
6TH GRADE = 6	
7TH GRADE = 6	
8TH GRADE = 6	
SCIENCE LABS (4)	
STEM / MAKER / THINK TANK (2.5)	
ADMIN. / FACULTY / NURSE	
CORE SPACES (3)	
PROGRAM (3)	
ART = 1	
MUSIC = 2	
SPECIAL ED/ SGI (5/3)	
MECH. / STOR. / TOILETS	
OUTDOOR LEARNING ENVIRONMENTS	

THIRD FLOOR PLAN



OPTION - 1
GRADES 6, 7, 8



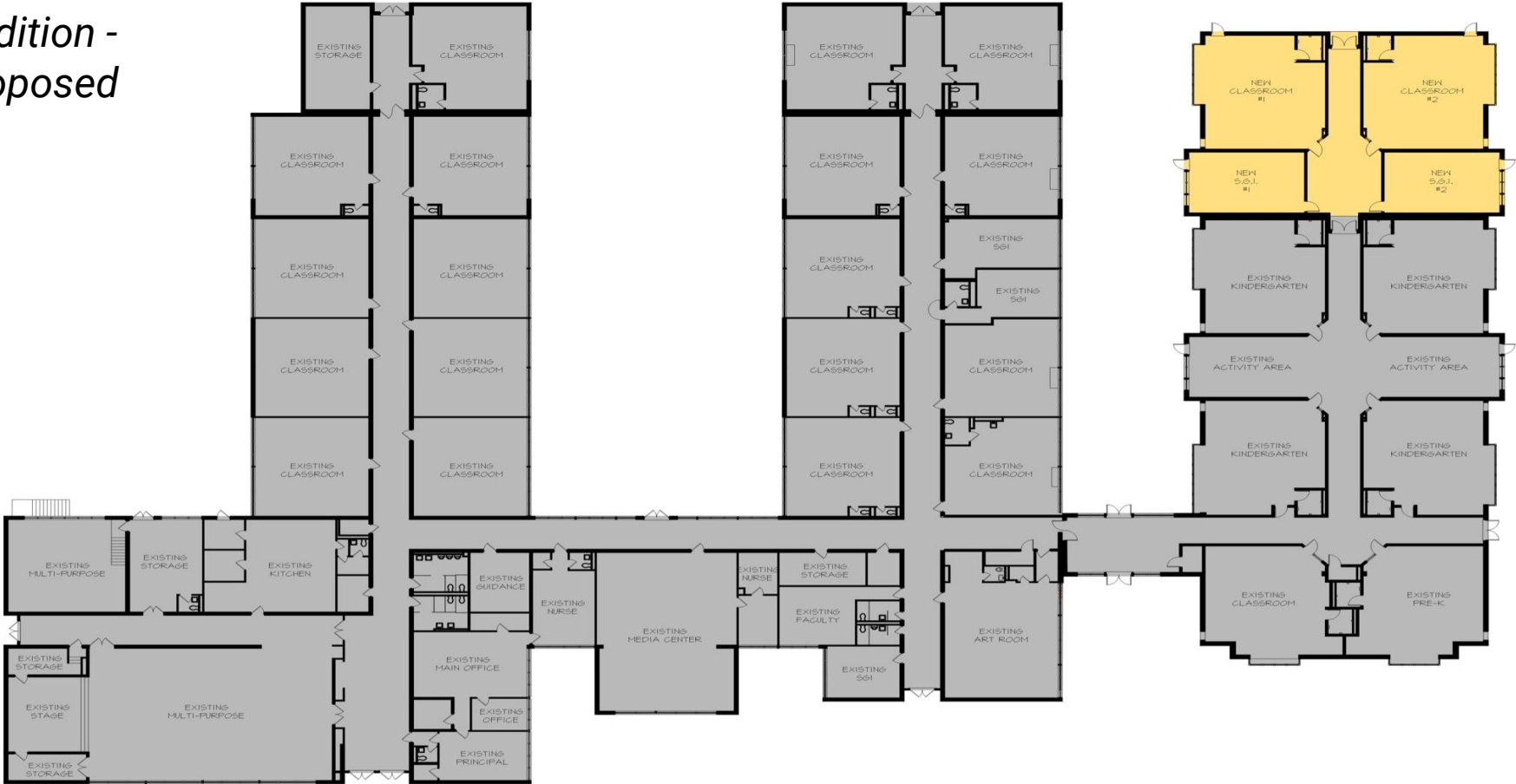
HILLSDALE BOARD OF EDUCATION

PROPOSED RENOVATIONS/ADDITIONS GEORGE G. WHITE SCHOOL



October 00, 2023

Meadowbrook
Addition -
Proposed



[illegible]

Option 2



George White - Floor 1 Option 2

ROOM UTILIZATION:	
GENERAL CLASSROOMS (18)	
6TH GRADE = 6	
7TH GRADE = 6	
8TH GRADE = 6	
SCIENCE LABS (4)	
STEM / MAKER / THINK TANK (3)	
ADMIN. / FACULTY / NURSE	
CORE SPACES (3)	
PROGRAM (5)	
ART = 1	
MUSIC = 2	
CULINARY = 1	
AT LAB = 1	
SPECIAL ED/ SGI (6/4)	
MECH. / STOR. / TOILETS	
OUTDOOR LEARNING ENVIRONMENTS	



FIRST FLOOR PLAN

MAGNOLIA AVENUE

OPTION - 2
GRADES 6, 7, 8



HILLDALE BOARD OF EDUCATION

PROPOSED RENOVATIONS/ADDITIONS GEORGE G. WHITE SCHOOL

George White - Floor 2 Option 2



ROOM UTILIZATION:	
GENERAL CLASSROOMS (18)	
6TH GRADE = 6	
7TH GRADE = 6	
8TH GRADE = 6	
SCIENCE LABS (4)	
STEM / MAKER / THINK TANK (3)	
ADMIN. / FACULTY / NURSE	
CORE SPACES (3)	
PROGRAM (5)	
ART = 1	
MUSIC = 2	
CULINARY = 1	
AT LAB = 1	
SPECIAL ED/ SGI (6/4)	
MECH. / STOR. / TOILETS	
OUTDOOR LEARNING ENVIRONMENTS	

SECOND FLOOR PLAN

OPTION - 2
GRADES 6, 7, 8



HILLSDALE BOARD OF EDUCATION

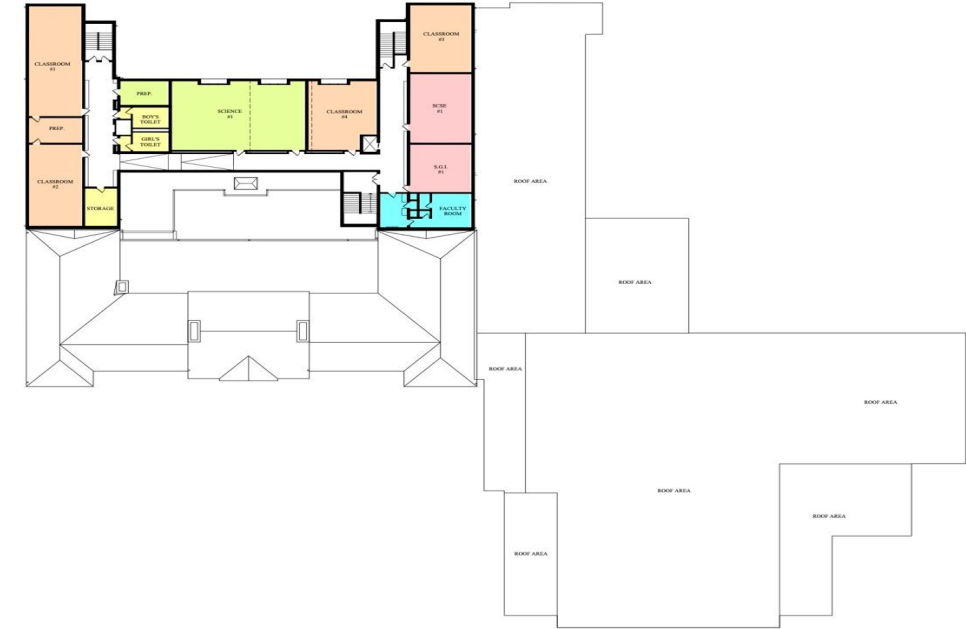
PROPOSED RENOVATIONS/ADDITIONS GEORGE G. WHITE SCHOOL



October 00, 2023

George White - Floor 3 Option 2

ROOM UTILIZATION:	
GENERAL CLASSROOMS (18)	
6TH GRADE = 6	
7TH GRADE = 6	
8TH GRADE = 6	
SCIENCE LABS (4)	
STEM / MAKER / THINK TANK (3)	
ADMIN. / FACULTY / NURSE	
CORE SPACES (3)	
PROGRAM (5)	
ART = 1	
MUSIC = 2	
CULINARY = 1	
AT LAB = 1	
SPECIAL ED/ SGI (6/4)	
MECH. / STOR. / TOILETS	
OUTDOOR LEARNING ENVIRONMENTS	



THIRD FLOOR PLAN



OPTION - 2
GRADES 6, 7, 8



HILLSDALE BOARD OF EDUCATION

PROPOSED RENOVATIONS/ADDITIONS GEORGE G. WHITE SCHOOL

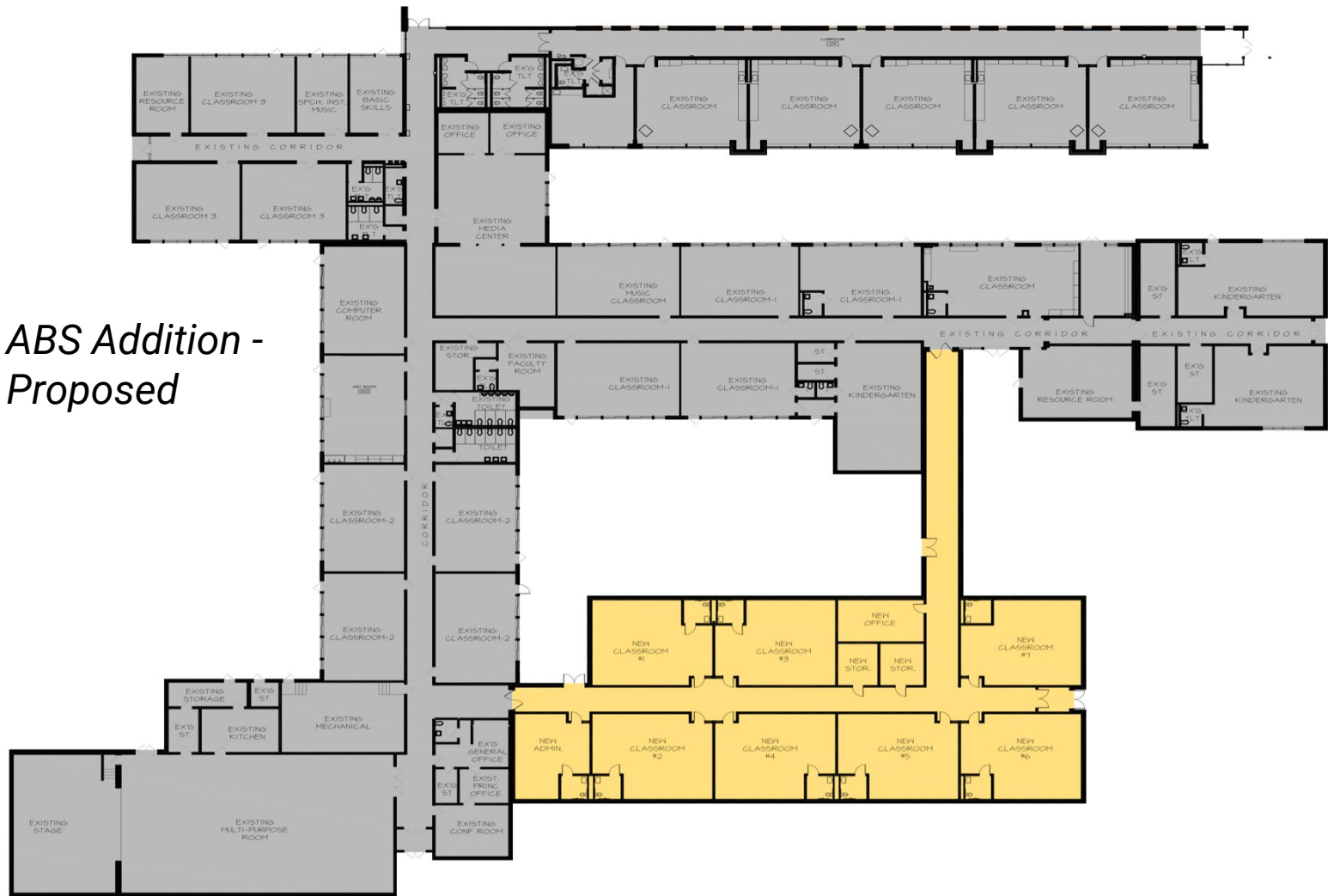


October 00, 2023

Meadowbrook
Addition -
Proposed



ABS Addition - Proposed



The Constraints

- The size of a classroom - Approx 540 sq ft.
- The number of classrooms
 - Every period rooms are filled
 - Restricting Scheduling
- Science Labs
 - Only 3 science labs when 4 are needed
 - Every science lab is dated and in need of updating for for access to a 21st century learning experience
- No dedicated STEM space
- Music
 - Currently use a small instruction space behind the stage for chorus
 - Band uses the stage in the multi-purpose room
- TV Production Studio
 - Classroom is among the smallest
 - Technology dates back 10 years - In need of renovated inviting space
- Cafetorium/ Multi Purpose Room
 - Acoustics, Lighting, Sound, Stage Space, Air Conditioning, Basketball Court

The Constraints Continued . . .

- Student lockers - When in use consistently, combination locks are consistently breaking, jamming, or malfunctioning
- No student common space to welcome gathering collaboration, social interaction
- Mechanical Systems
 - Heating
 - Electric
- Restrooms - You have seen them, but this is coupled with frequency in sink, stall and urinal closings
- Nurse's Office - Small, poor traffic flow for nurse and students, open space with added privacy for those experiencing illness/personal need
- Wellness Space
- Counseling space for students - Limited
- When it rains . .
- Parking
- Drop-Off/Pick-Up Zones

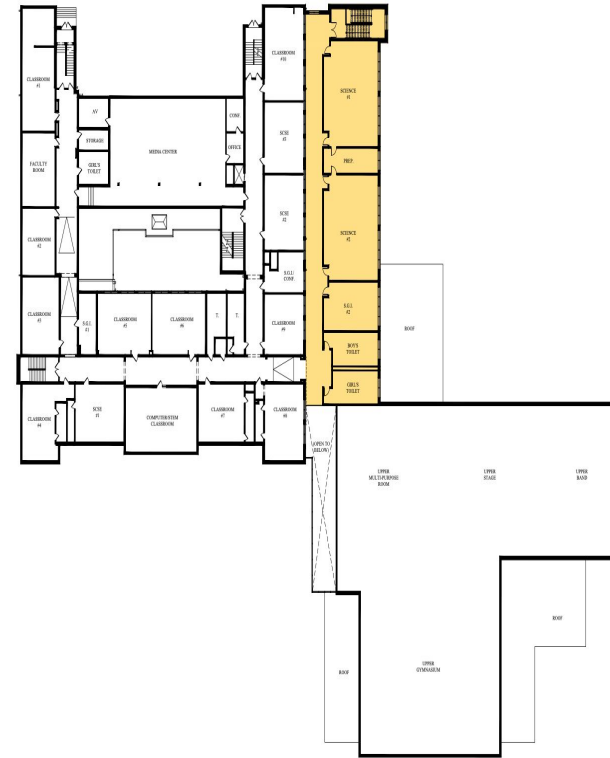
The Constraints Continued . . .

- Cafeteria Services - No built for servicing 500+
- Intercom System - Showing its age - Sounds begins to diminish as the lines travel from the main office
- Conference Room Space- Parent meetings
- Small Group Instruction Rooms
- Stairwell- Conditions and width
- Building Facade, Cement Structure and Exterior Attributes
- Field/Blacktop Area
- Flooring
- Windows
- Storage - Teacher classrooms, gym, multi-purpose room, books overall

First Floor



Second Floor



Question B

Additional classrooms for increased enrollment and enhanced programming